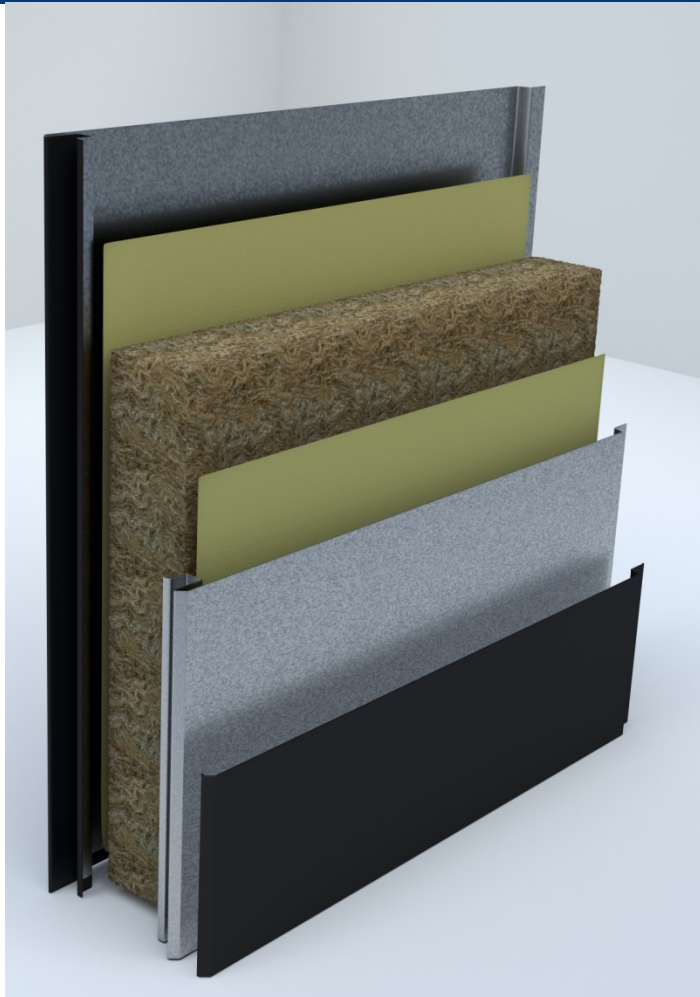


Fire and smoke tight sliding door High quality for demanding architecture



T30 EI₂30 T90 EI₂90 RS Sm MZ

1. Fully glued flush elements



- Fully glued flush elements for a solid door panel with high overall appearance

T30 EI₂30 T90 EI₂90 RS Sm MZ

2. High quality overall appearance



Surface finishes:

- Pearlgrain surface
- Zink coated steel, 0,75 mm
- Stainless steel V2A 240

Colours:

- Optionally RAL to choose
- in 7 preferred colours



3. Perlgrain Surface



- Resistant to mechanical damage during operation and fitting
- Especially suited for use in warehouses
- Optionally in RAL to choose

T30

El₂30

T90

El₂90

RS

Sm

MZ

4. Time-saving installation



- High-quality overall appearance with the patented groove/spring element connection for easy assembly
- Time-saving installation without visible screw
- Element width 72 mm in T30/EI₂ 30 and T90/EI₂ 90

T30 EI₂30 T90 EI₂90 RS Sm MZ

5. Wicket door without treshold rail



- Wicket door without threshold rail in pearlgrain finish also for smoke tight sliding doors

T30 EI₂30 T90 EI₂90 RS Sm MZ

6. Precise door leaf guide with patented



- Precise door leaf guide with patented track and 3- dimensional adjustment
- Optimal force balance
- easy actuation is ensured, thanks to a suspension with ball-bearing.

T30 EI₂30 T90 EI₂90 RS Sm MZ